

Brown Bag Lunch

Implementing environmental and social safeguards in post-peace agreement landscapes and projects in Colombia

Sharing experiences and lessons-learned from two IKI Project cases in Orinoquía and Amazonia

Online, 29 October 2025



Federal Ministry
for the Environment, Climate Action,
Nature Conservation and Nuclear Safety

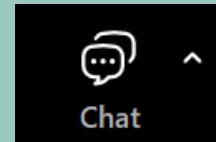


Welcome

IKI Brown Bag Lunch

Netiquette:

- Please log in with your full name and organization
- Please switch off all microphones
- Chat icon for content-related questions and technical questions



© Julián Manrique/WWF Colombia



**Welcome Note: Alban Kisife, Policy Officer, Division N I 5
(International Cooperation on Biodiversity),
Federal Ministry for the Environment, Climate Action,
Nature Conservation and Nuclear Safety**



Supported by:



Federal Ministry
for the Environment, Climate Action,
Nature Conservation and Nuclear Safety



based on a decision of
the German Bundestag

Implementing environmental and social safeguards in post-peace agreement landscapes and projects in Colombia.



Content

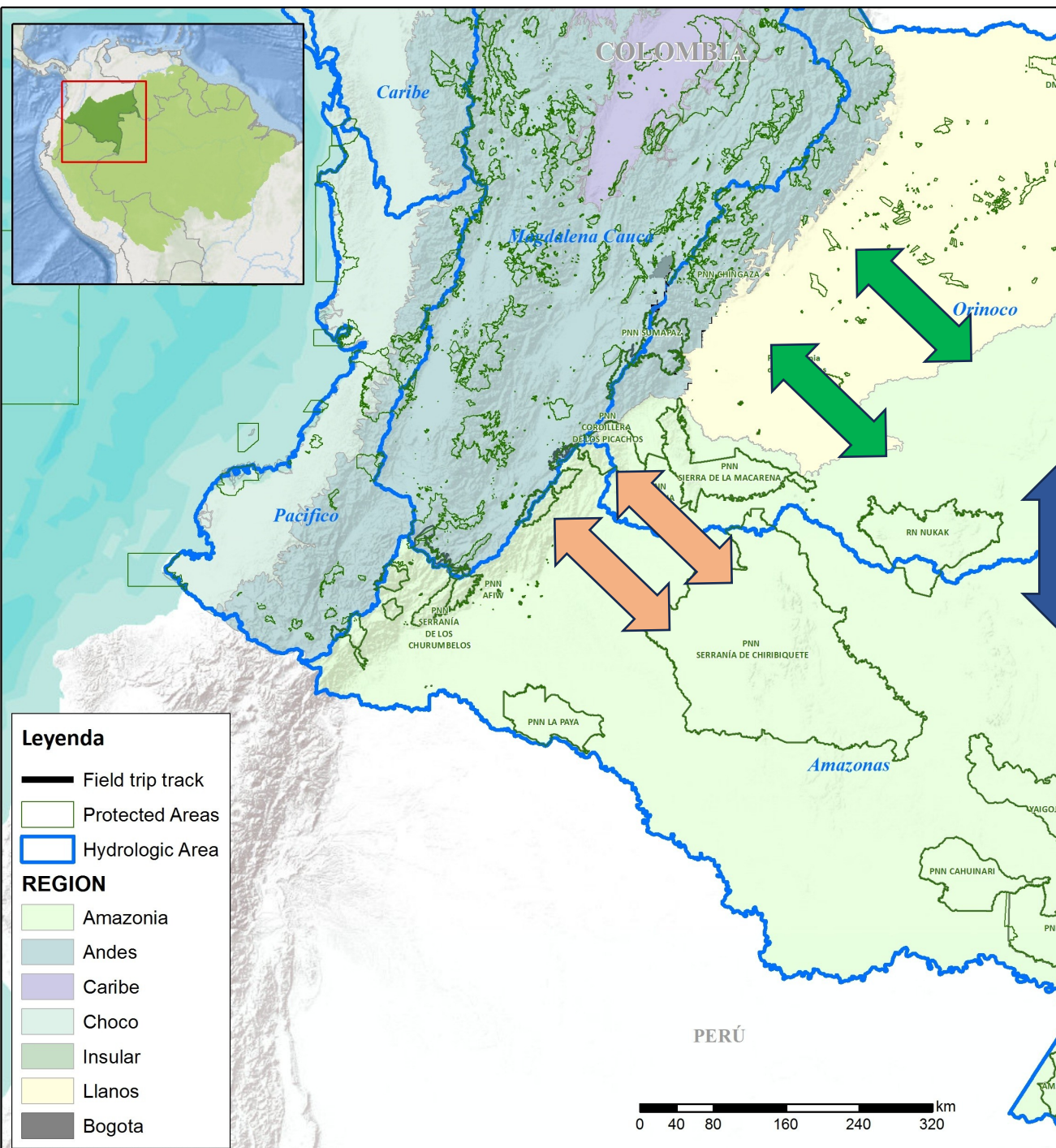
1. Who we are
2. Context
3. IKI projects
4. ESSF
5. Safeguards in the ground
 - IKI Savannahs
 - Protected areas and Peace
6. Lessons learned



WWF is an independent global conservation organization, committed to building a future where people and nature thrive.

Our mission is to stop the degradation of the planet's natural environment and to build a future in which humans live in harmony with nature by:

- ✓ Conserving the world's biological diversity;
- ✓ Ensuring that the use of renewable natural resources is sustainable;
- ✓ Promoting the reduction of pollution and wasteful consumption.

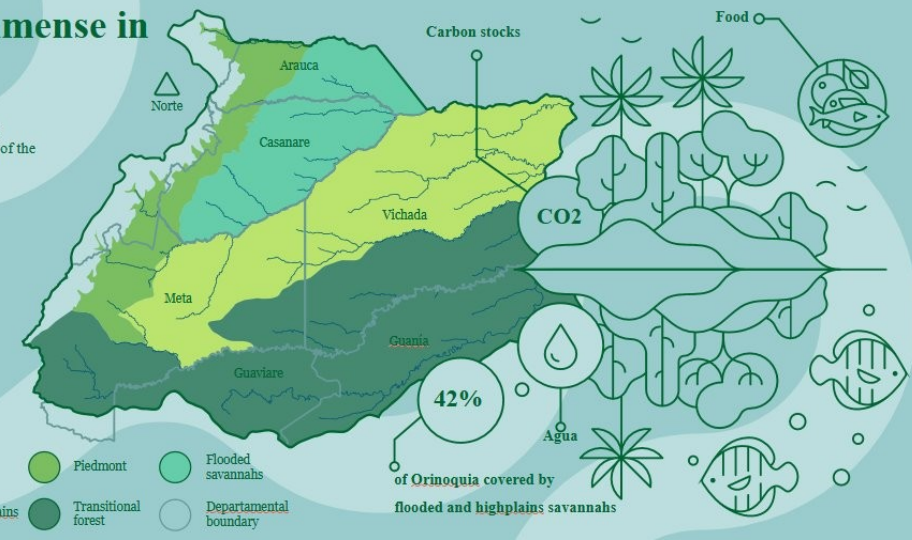


Orinoquia: immense in nature

Water, food, carbon capture and storage, cultural values... these are part of the benefits that the rich ecosystems of the Orinoquia provide to the country.

- 22% of the country
- 48% of its inland wetlands
- 32% of its water reserves

- Andes
- Piedmont
- Flooded savannahs
- Highplains
- Transitional forest
- Departamental boundary



Threats and pressures

- Savannahs: overlooked ecosystems
- Non-planned expansion of productive activities
- Deforestation and conversion
- Climate change
- Infrastructure and extractives

COLOMBIAN AMAZON

40% of the national territory

66% of the country's forests

Great diversity: birds, fish,
amphibians, reptiles

Key Sp: jaguar, river dolphins

Map of the Colombian Amazon



1% Peasant
Reserve Zones



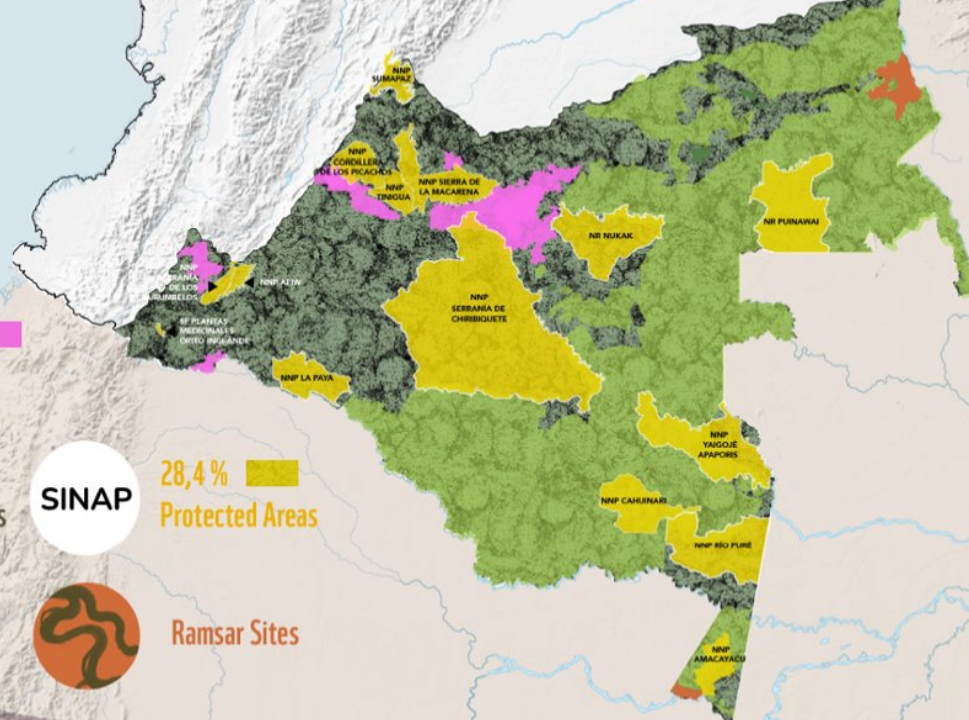
53,5%
Indigenous Reserves

SINAP

28,4%
Protected Areas



Ramsar Sites



Drivers of deforestation and dynamics of ecosystem transformation

The Amazon on the edge of the no-return

Loss of more than 30 million hectares in 20 years

Main threats

-  Extensive livestock
-  Land grabbing
-  Illicit crops
-  Illegal logging and mining

ILLEGAL MINING

- Degradation
- Pollution

COCA CROP FOR ILICIT USE

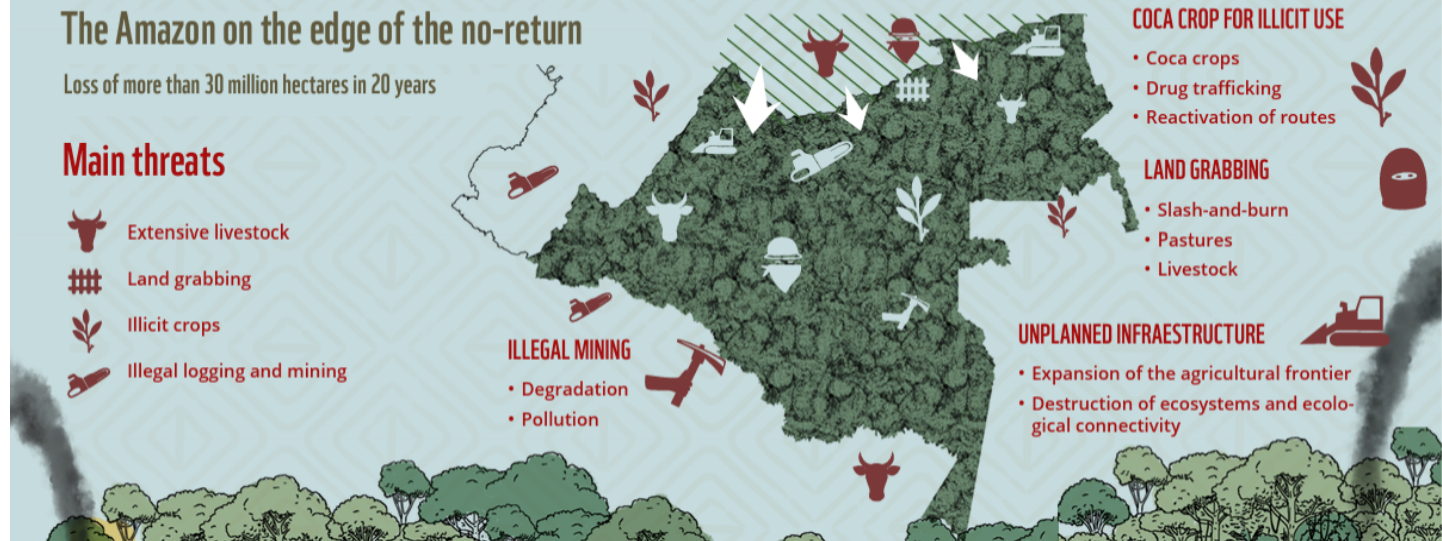
- Coca crops
- Drug trafficking
- Reactivation of routes

LAND GRABBING

- Slash-and-burn
- Pastures
- Livestock

UNPLANNED INFRASTRUCTURE

- Expansion of the agricultural frontier
- Destruction of ecosystems and ecological connectivity





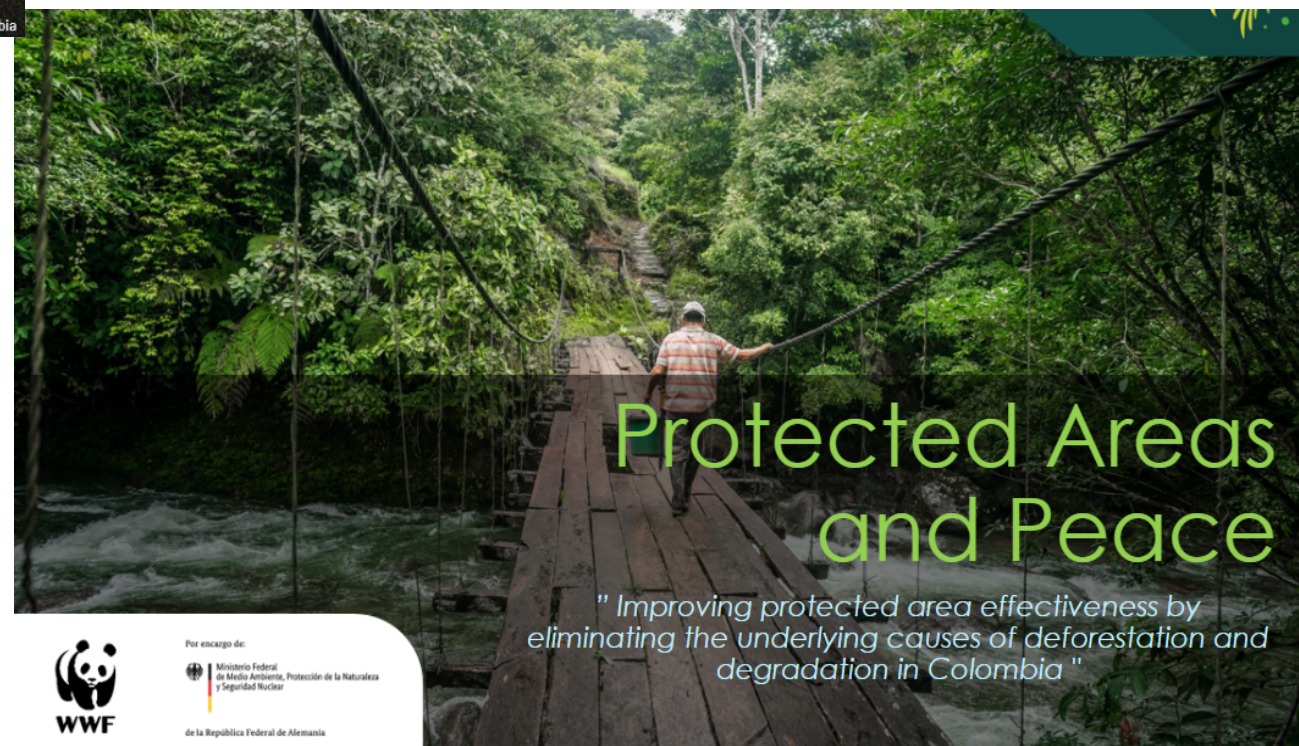
Safeguarding overlooked ecosystems: protect, manage and restore grasslands and savannahs in Argentina, Colombia and Paraguay

IKI Sabanas

Objective:
Protect, manage, and restore savannahs and grasslands in Argentina, Colombia, and Paraguay through multisectoral engagement and knowledge sharing



© WWF Colombia



Protected Areas and Peace

"Improving protected area effectiveness by eliminating the underlying causes of deforestation and degradation in Colombia"



Por encargo de:
Ministerio Federal
de Medio Ambiente, Protección de la Naturaleza
y Seguridad Nuclear
de la República Federal de Alemania

WWF's ESSF

WWF's Safeguards are a set of standards, planning and implementation mechanisms, and compliance systems, that govern how activities are planned and carried out to safeguard people and natural systems from harm arising from our activities.



PROCEDURAL
SAFEGUARDS

STAKEHOLDER
ENGAGEMENT

We engage
and work with
stakeholders

SAFEGUARDS
PROCESS

The process and steps
we take

GRIEVANCE
MECHANISMS

We take all complaints
seriously and seek
resolution



RISK ANALYSIS
(SCREENING TOOL)



RISK MITIGATION
PLAN

Landscape and project level



STAKEHOLDER
ENGAGEMENT PLAN

Landscape level



GRIEVANCE
MECHANISM

Office-level and IKI mechanism



ORINOQUIA REGION

- IKI SAVANNAHS

How do we implement Safeguards Framework in the Orinoquia Region?

- WWF Environmental and Social Safeguards Framework - ESSF and Statements of Principles (2023).
- World Bank Environmental and Social Framework and Standards
- IFC Performance Standards



Instruments

1. Environmental and Social Risk Assessment
2. Environmental and Social Commitment Plan (PCAS):
 - Mitigation measures, term, responsible.
 - Monitoring and reporting. Every 6 months
3. Stakeholders engagement plan
4. Planning framework for indigenous peoples
5. Labor and Employment Management Procedures
6. Specific procedures: e.g. Procedure framework to mitigate risk S5
Land Acquisition, Restrictions on Land Use and Involuntary
Resettlement
7. Security protocol
8. Grievance mechanism



Project level-Donor requirements –

IKI Grasslands and Savannahs

Environmental and social risk analysis and safeguards measures:

Safeguards risk category

Based on the risk the overall safeguards risk category for the overall project is:

☒ B – Medium Risk

We do not see a conflict with any of the IKI exclusion criteria



Tools

1. Land tenure Due diligence
2. Land use restriction analysis



IKI Grasslands and Savannas



Land Tenure Rights

Purpose (why it matters)

- A consortium-led due diligence process to review and verify land tenure and use rights in the selected areas.
- Define who holds rights to use, manage, and benefit from land and natural resources in the savannas.
- Reduce conflict risks and ensure safeguards alignment for conservation actions and access arrangements.

Key Risks to Manage

- Overlapping/uncertain boundaries; third-party occupants inside/adjacent to collective lands.
- Access restrictions that affect livelihoods (fishing, grazing, fuelwood) without due process.
- Legacy disputes reignited by mapping or new zoning.
- Elite capture or exclusion of women/youth/clans in land/use decisions.





AMAZON-ORINOCO TRANSITION REGION

PROTECTED AREAS AND PEACE

How do we implement Safeguards Framework?

- Risk analysis and mitigation plan
- Stakeholder engagement
- The safeguards, mitigation plan, and grievance mechanisms were shared through various workshops and socialization spaces with communities and partners
- Follow-up and monitoring of the Mitigation Plan have been carried out to track progress and ensure implementation of agreed measures
- Capacity building on key topics: risks and security, human rights



The background image shows a group of people, likely campesinos, in a lush green forest. In the foreground, a man in a white shirt and a red backpack is looking towards the right. Behind him, another man in a blue shirt is visible. The forest is dense with tall trees and green foliage, creating a natural and serene setting.

Restrictions on Access to Land and Natural Resources Standard

- Campesino communities already face **use restrictions** within Protected or Conserved Areas.
- The project promotes **dialogue and training** to reach **voluntary, equitable agreements** and **develop restoration-based alternatives**.
- Supports **Productive Ecological Restoration**, recognizing campesinos' vital role in conserving **biological, cultural, and agricultural diversity**.
- Includes an active **Grievance and Redress Mechanism (Q&R)** with **quarterly follow-up**.



GRIEVANCE MECHANISM



CONÓCENOS ▾

DÓNDE TRABAJAMOS ▾

QUÉ HACEMOS ▾

DE INTERÉS ▾

CÓMO AYUDAR ▾

EXPEDICIONES ▾

COP16 ▾



About IKI Find funding Manage Project Search Project



[Home](#) > [Independent Complaint Mechanism](#)

Independent Complaint Mechanism (IKI ICM)



Contact

Office of the IKI Independent
Complaint Mechanism (IKI ICM)

iki-complaints@z-u-g.org

[Independent Complaint Mechanism | Internationale
Klimaschutzinitiative \(IKI\)](#)

MECANISMO DE QUEJAS Y RECLAMOS

MECANISMO QUEJAS Y RECLAMOS WWF COLOMBIA

En cumplimiento de su misión, **WWF COLOMBIA** previene cualquier impacto negativo de sus acciones no solamente sobre el medio ambiente y la biodiversidad, sino también sobre el entorno social en el cual desarrolla su accionar. Por esta razón y en cumplimiento con sus Políticas Sociales y Salvaguardas ambientales y sociales, **WWF COLOMBIA** ha establecido un procedimiento para recibir y responder de manera atenta a reclamos planteados por grupos de interés o personas quienes consideran que sus derechos están siendo afectados o puedan generar un perjuicio inminente por las gestiones y acciones de conservación llevadas a cabo o en la cuales **WWF COLOMBIA** tenga una participación directa, con lo cual la intervención de WWF COLOMBIA busca respetar y aplicar las Políticas Sociales – y las Salvaguardas como garantía de que la conservación incluye un enfoque integral contribuyendo también al bienestar social.

[| WWF](#)

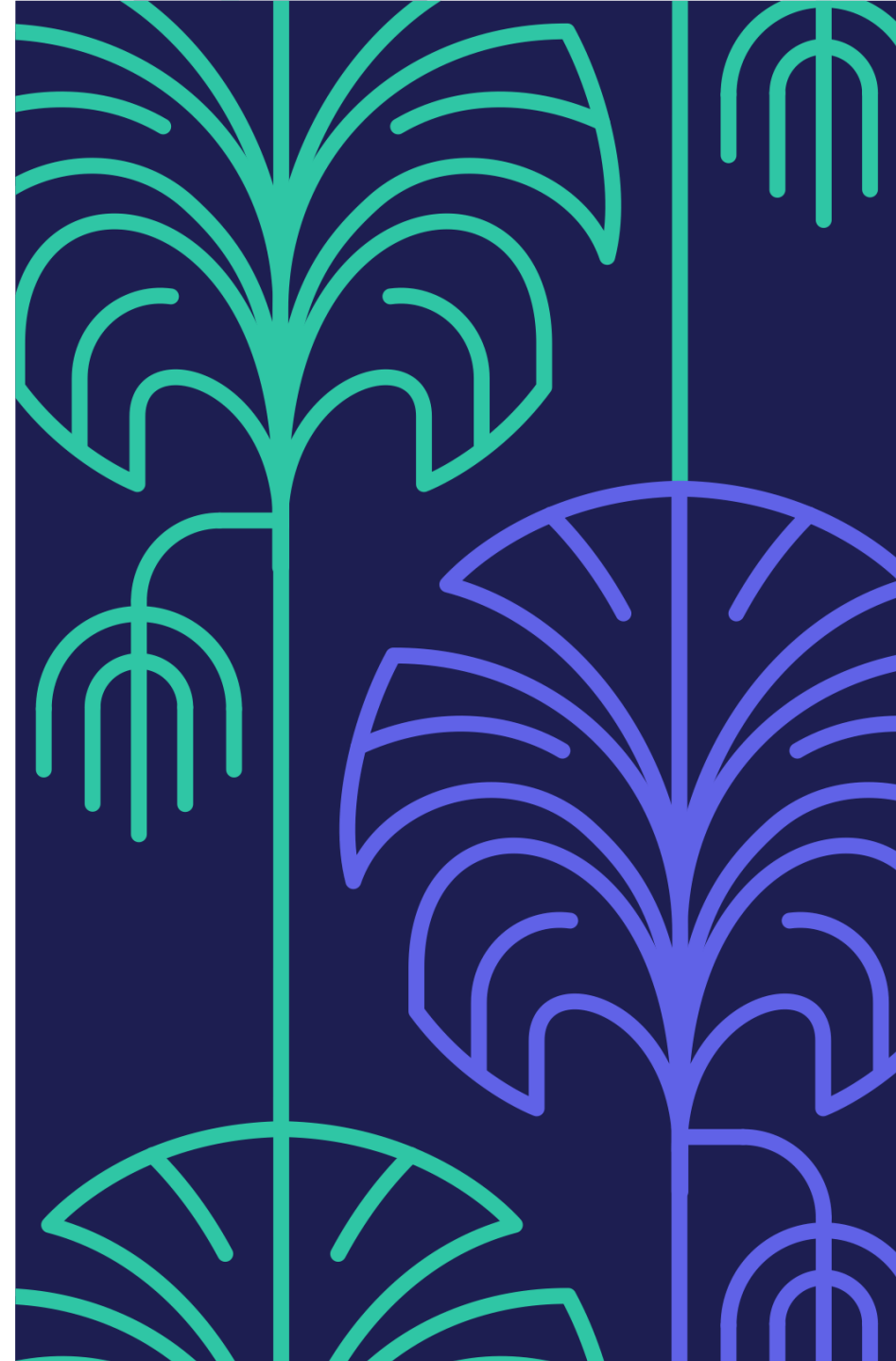


Challenges

- Ensuring that all stakeholders fully internalize the safeguards, given the extensive information shared alongside project details and the coexistence of multiple initiatives in the field.
- Intensive effort and coordination required to monitor the Mitigation Plan across diverse sites and actors effectively.
- Balancing the need for clear safeguard standards with the flexibility required to adapt them to each project's specific context and local realities.

Key Takeaways

- Safeguard frameworks may differ across organizations (WWF, WB, IFC, IKI, etc.), but they all share one goal: protecting people and nature.
- Safeguards tools are valuable for reflection and accountability, but their impact depends on making them practical and accessible beyond lengthy formats and Excel sheets
- From Projects to Landscapes: Connecting safeguards across scales strengthens collaboration and greater impact.





Thanks!





Q&A SESSION

THANK YOU FOR YOUR ATTENTION



international-climate-initiative.com



linkedin.com/iki-germany



[@iki_germany](https://twitter.com/iki_germany)



[@iki-germany.bsky.social](https://bsky.social/iki-germany)



iki-office@z-u-g.org